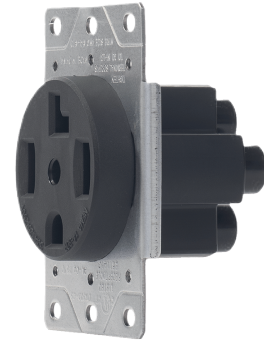


General Specification



30A FLUSH MOUNTING RECEPTACLE 3-POLE, 4-WIRE

Item Code: TAN-378B



Features

- Fits wall plates with a 2.15" diameter center hole
- Flush mount devices fit single or 2-gang outlet boxes
- Heavy gauge double-wire copper alloy contacts
- Flammability UL94, V2 Rating
- High impact-resistant chemical-resistant nylon
- Reinforced thermoplastic polyester
- Heavy gauge steel mounting strap zinc plated for corrosion resistance

Specification

Amperage: 30 Amp	Pole: 3
Blade Type: Straight Blade	Wire: 4
Color: Black	Voltage: 125/250 Volts
Feature: Commercial Grade	Termination: #4-#10 AWG
Grounding: Grounding	Type: Power Device
NEMA: 14-30R	Warranty: 2-Year Warranty

Testing & Code Compliance



ISO9001 Registered manufacturing facility

Installation

- Easy to wire terminals accept #4 - #10 copper or Aluminum wiring
- Large head combination screws for easy wiring
- To ensure correct wiring, terminals have ID markings

